

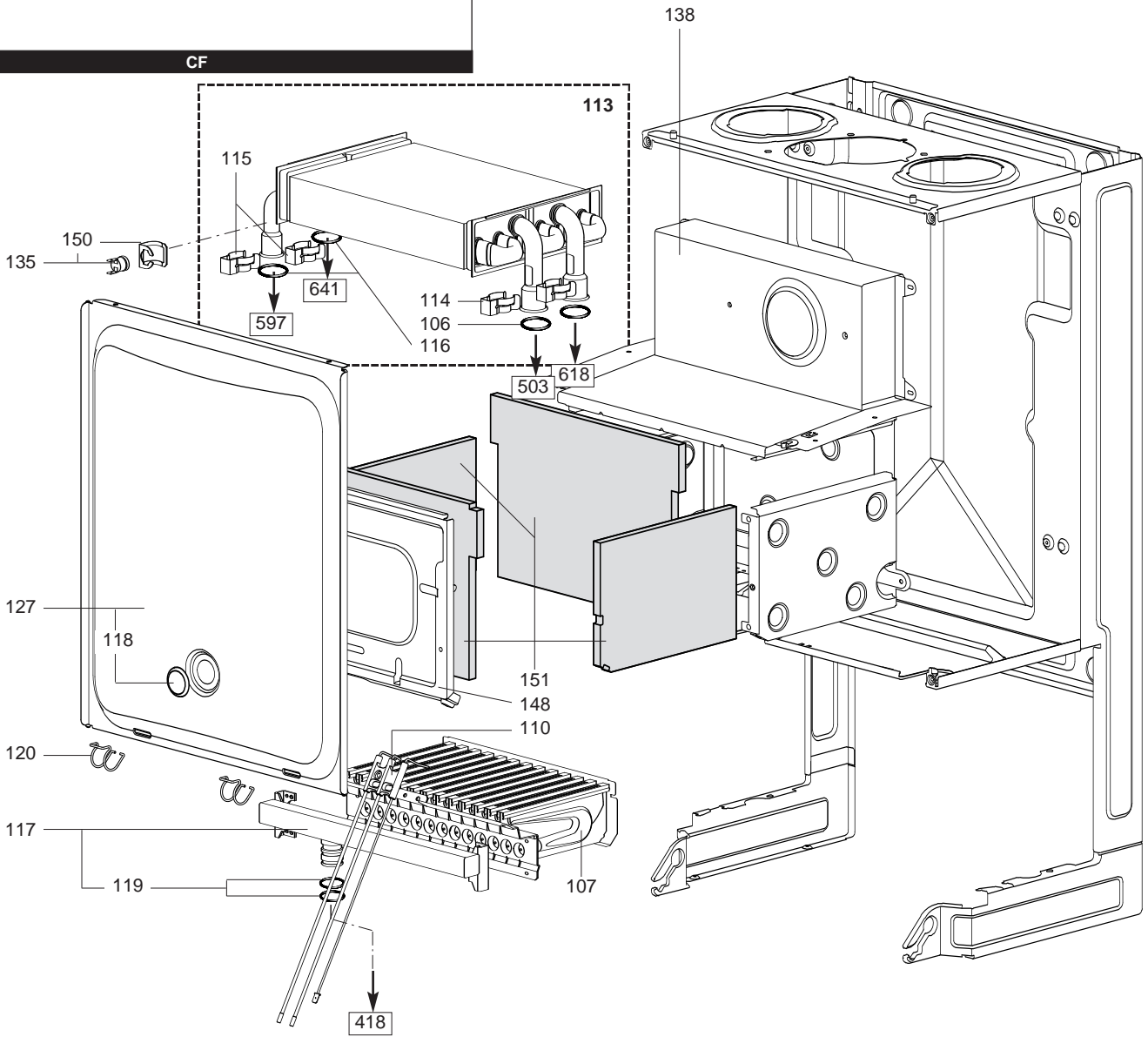
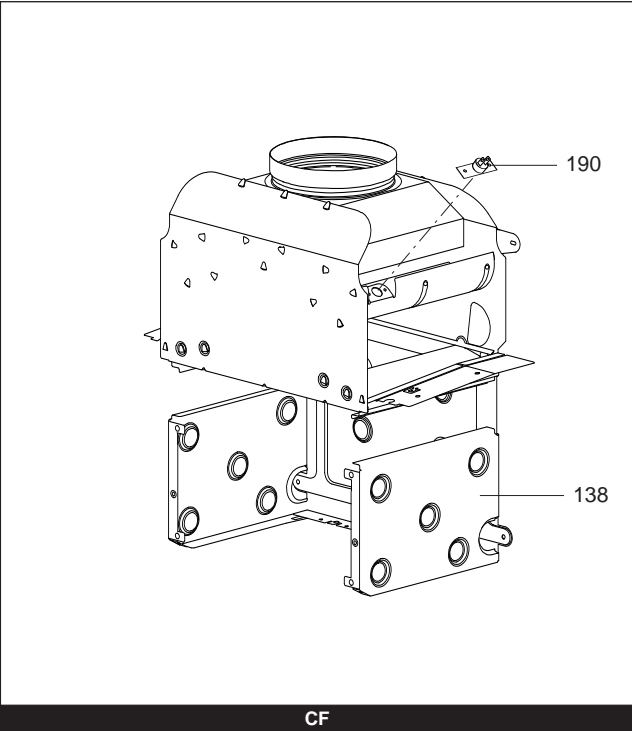
# SPARE PARTS EXPLODED VIEW GAS WALL BOILERS

Model

**EGIS**

R8215814-01EN - Edition 01 - 01/02/2007

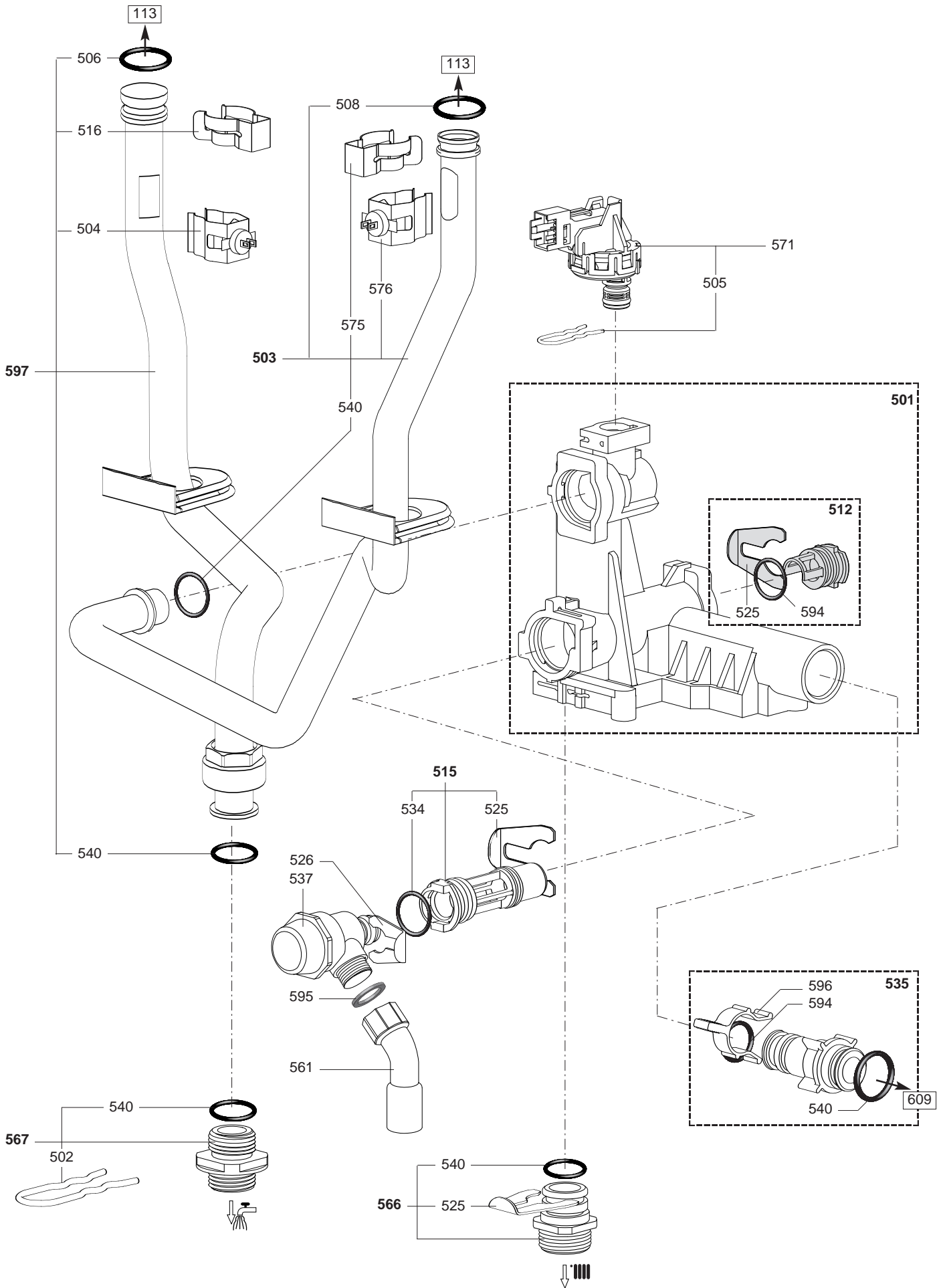
3300193		EGIS 24 FF NG (EAA1)	...	...
3300194		EGIS 24 CF NG (EAA1)	...	...
Reference	Ind.	Model type	Begin	End







Key N	Description	Manf. Pt. N	Other	Type	FF	CF	Manf. date	
							from	to
<b>0200</b>	<b>FAN ASSEMBLY</b>							
0201	SUPPORT (AIR PRESSURE SWITCH)	65104378			•			
0206	FAN	65104357			•			
0208	FAN GASKET	65104257			•			
0210	PRESSURE INTAKE COVER	573329			•			
0212	PANEL (INSULATION - FAN)	65104305			•			
0216	AIR PRESSURE SWITCH	65104671			•			
0220	CONDENSATE TRAP	65104623			•			
<b>0300</b>	<b>CHASSIS-FRONT CASE</b>							
0303	RESTRICTOR (D=44)	65105078			•			
0304	FLUE (EXHAUST MANIFOLD / HEADER)	65104221			•			
0305	AIR RETURN MANIFOLD	65104710			•			
0306	AIR RETURN COVER	65104249			•			
0320	GASKET	60000317			•			
0321	GASKET 3/8	573521			•	•		
0322	FLUE INTAKE PLUG	65104295			•			
0324	PIPE (EXPANSION VESSEL)	65104253			•	•		
0325	O-RING D: 8.9-2.7	61009834-14			•	•		
0327	EXPANSION VESSEL	65104261			•	•		
0337	HYDRAULIC GROUP SUPPORT	65104311			•	•		
0342	CASE PANEL (L.H. SIDE)	65105095			•	•		
0344	CASE PANEL (FRONT)	65104299			•	•		
0345	CASE PANEL (R.H. SIDE)	65105096			•	•		
0363	EXPANSION VESSEL SUPPORT	65104696			•	•		
<b>0400</b>	<b>GAS SECTION</b>							
0401	GAS VALVE	65104254			•	•		
0405	GASKET (SPARK GENERATOR)	574279			•	•		
0406	O-RING 22,22X2,62	65104304			•	•		
0407	SILICONE PIPE	65104296			•	•		
0418	PIPE (GAS VALVE/BURNER)	65104230			•	•		
0419	GAS PIPE	65104251			•	•		
0436	O-RING 17,17X1,78	65104303			•	•		
0444	SPARK GENERATOR	65104653			•	•		

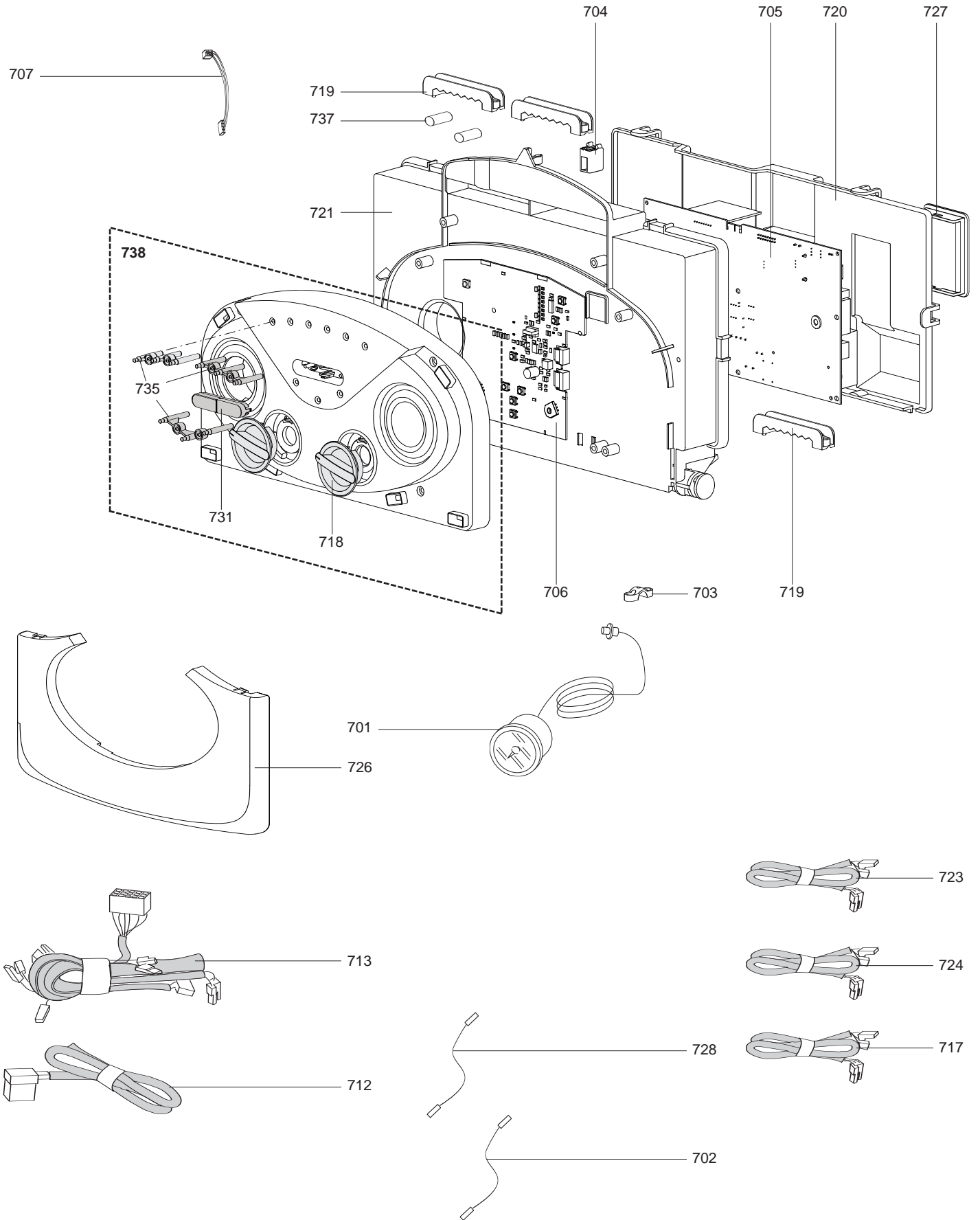




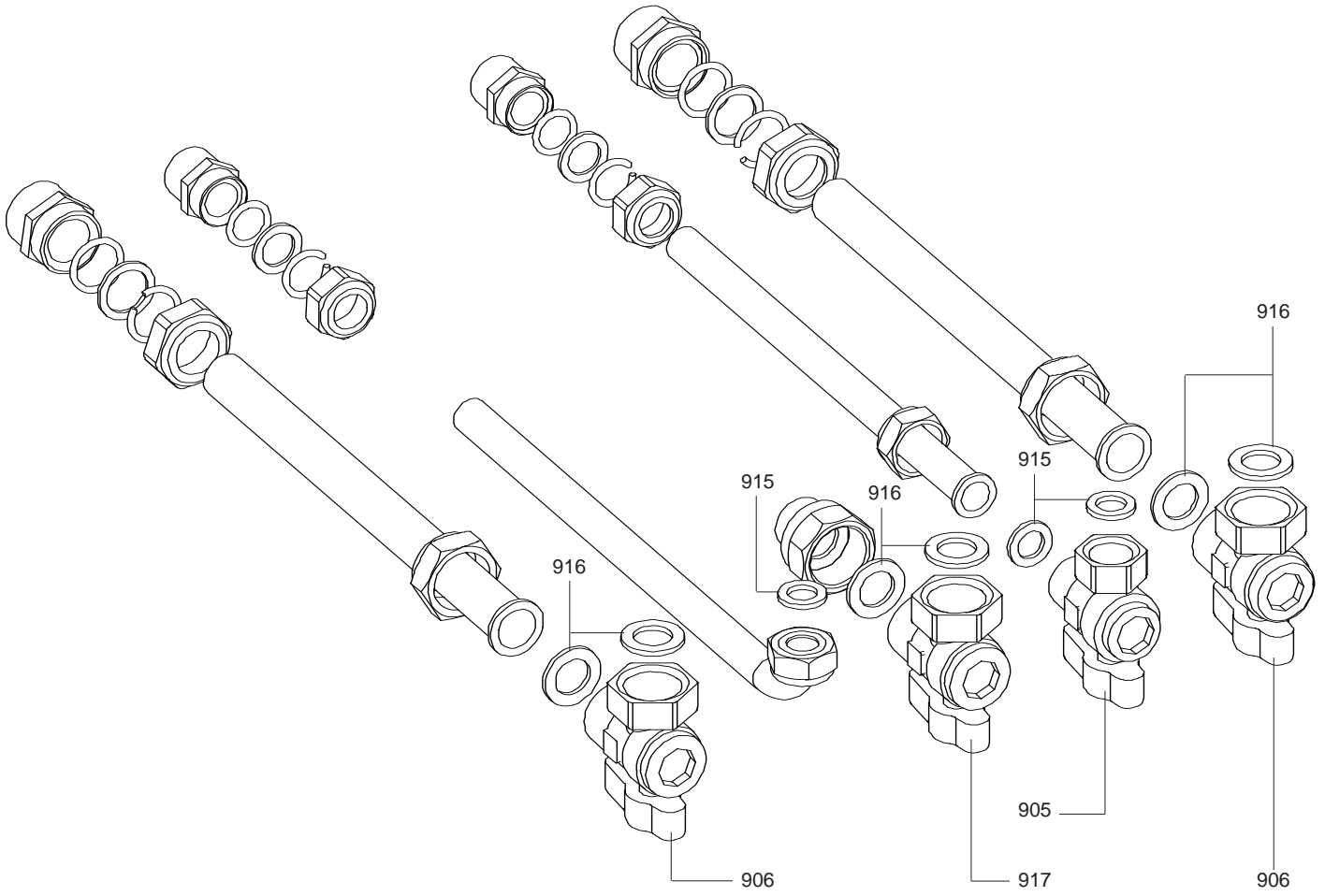




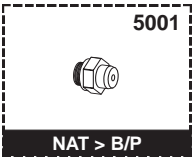
Key N	Description	Manf. Pt. N	Other	Type	FF	CF	Manf. date	
							from	to
0600	RETURN GROUP							
0602	DRAIN COCK	65104328			•	•		
0603	PLUG	65105093			•	•		
0604	CLIP	65104331			•	•		
0605	O-RING 3,53X17,04	65104262			•	•		
0606	SENSOR (REED)	65104323			•	•		
0608	CLIP	65104316			•	•		
0609	RETURN GROUP	65104335			•	•		
0610	FILLING TAP KIT	65104324			•	•		
0611	RIDUCTORS (KIT)	65104318		8-10-12 LT	•	•		
0612	CLIP D=18	65104259			•	•		
0613	CLIP D=10	65104260			•	•		
0614	O RING D: 5.7-1.9	61009834-10			•	•		
0615	PRESSURE GAUGE	65104234			•	•		
0617	O - RING (21.89X2.62)	65104320			•	•		
0618	PIPE (C.H. RETURN)	65105102			•	•		
0619	PUMP	65105039			•	•		
0620	O-RING D: 17.86-2.62	61308091			•	•		
0622	WATER FILTER	65104711			•	•		
0623	O - RING (9.19X2.62)	65104313			•	•		
0624	CLIPS	65100680			•	•		
0625	CLIP	60000309			•	•		
0626	O - RING (1.78X8.74)	65104329			•	•		
0627	O - RING (23.47X2.62)	65104315			•	•		
0628	UNION (3/4)	65104326			•	•		
0629	UNION (1/2)	65104327			•	•		
0630	3-WAY SPRING KIT (D.H.W.)	65104317			•	•		
0631	CLIP	61307589			•	•		
0633	PLUG	65104377			•	•		
0634	UNION (PUMP - PIPE)	65105103			•	•		
0635	O - RING (15.54X2.62)	65104325			•	•		
0637	O-RING 17,17X1,78	65104303			•	•		
0638	AUTO AIR VENT WITH O-RING	65104703			•	•		
0639	U-CLIP	65104704			•	•		
0640	O-RING	65104705			•	•		
0641	INTERFACE	65105092			•	•		
0642	O - RING (13X2)	65105108			•	•		
0643	DOMESTIC HOT WATER DELIVERY PIPE	65105104			•	•		
0644	UNION (PIPE - DELIVERY GROUP)	65105105			•	•		
0645	CLIP	65105109			•	•		
0646	EXCHANGER GASKET	65104334			•	•		







5000





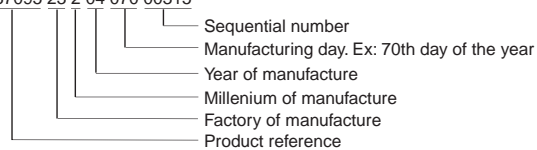
## LIST OF THE ABBREVIATIONS

HW .....	: Hot water.
CW .....	: Cold water.
C .....	: Ceramic resistance (normal heating).
Ca .....	: Ceramic resistance (accelerated heating)
TP .....	: Immersion heater.
1F .....	: With fittings.
2F .....	: Without fittings.
3F .....	: With fittings and another outlet connection.
AMI .....	: With mixing valve.
SMI .....	: Without mixing valve.
PUISS .....	: Power of th appliance.
PN .....	: Appliance with normal pression.
LP .....	: Appliance with low pression.
PV .....	: Appliance with variable power.
PF .....	: Appliance with fixed power..

## IDENTIFICATION PLATE

### SERIAL NUMBER

Ex: 0537095 23 2 04 070 00315



The indications mentioned on the prices, commercial or technical literature and the scheme are written for your guidance and are available at a given time. The CONSTRUCTOR retains the power to modify the presentation, the form, the size, the conception or the material of the products.